

# GRP Mezzanine Floor

Building a Mezzanine Floor System in 5 days using Composite Technology



## Before

- Far Left of new Warehouse storage facility
- Warehouse being cleared in preparation for new mezzanine storage area



## Before

- Centre of new Warehouse storage facility
- Dura Profile fibreglass profile sections being cut to size ready for installation



## Before

- Far right of proposed new storage facility



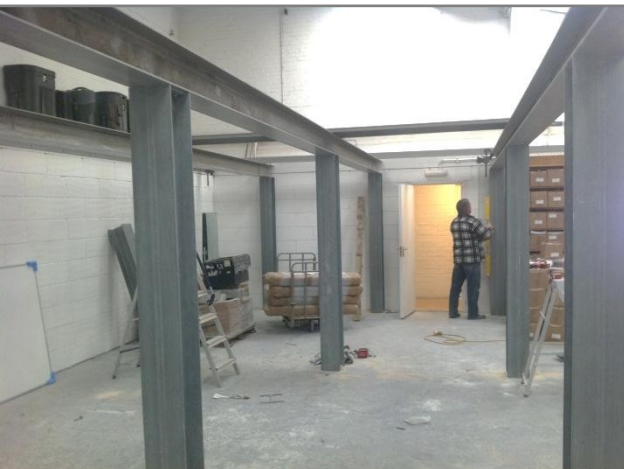
## Day 1&2 – Erecting Structure

- Dura Profile I-Beam Column supports and main cross beam in place
- Assembled using Dura Profile assembly guide



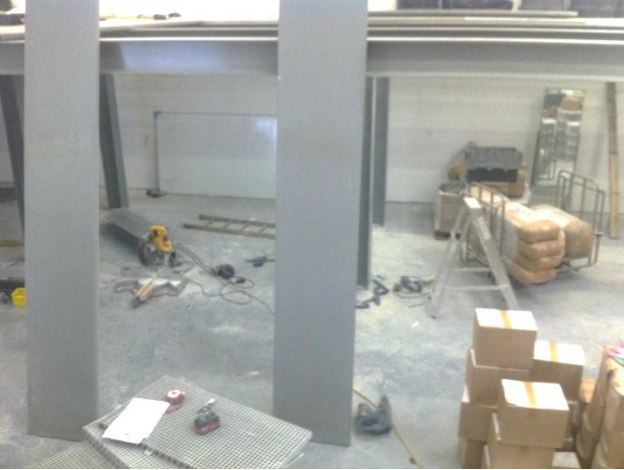
## Day 1&2 – Erecting Structure

- Image to show stainless steel heavy duty fixings to join column and beam



## Day 1&2 – Erecting Structure

- Main cross beam measures 11 metres with column supports at 2.2m in height
- Spans set at 3m intervals to suit load requirements



### Day 3

- Dura Slab Type 40 ready to lift into position to create rapid install mezzanine anti-slip flooring



### Day 3

- Mesh flooring on right side is Dura Tread 38mm anti slip grating selected to allow more light on right side of mezzanine storage area



### Day 3

- Flooring on left is Dura Slab Type 40 being slotted together and fixed into position
- Each panel measures 3.66m in length, supported at 1.83m



## Day 4

- Completed mezzanine anti-slip deck area



## Day 4

- Stair case created from Dura Tread structural stair treads and Dura Profile fibreglass section for stair stringers



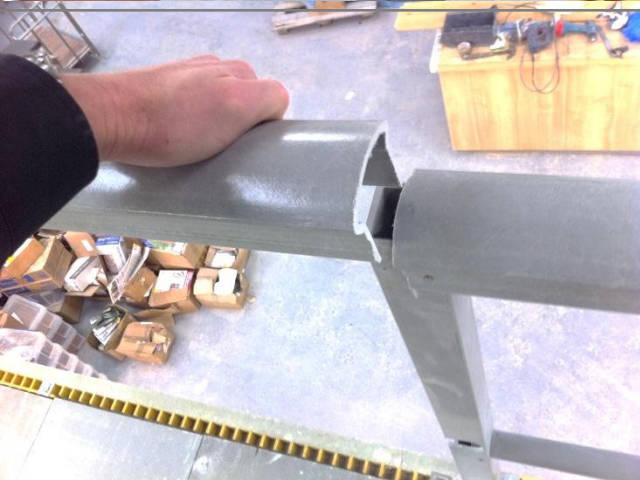
## Day 4

- Handrailing now in position created using fibreglass omega, box and tubular sections



## Day 5 - Health & Safety Checks

- Mid rail section can be locked in position OR removed for forklift access



## Day 5 - Health & Safety Checks

- Omega top rail can be removed for forklift access for more bulky items



## Day 5 - Health & Safety Checks

- Stainless Steel bolt used to secure removable top rail section



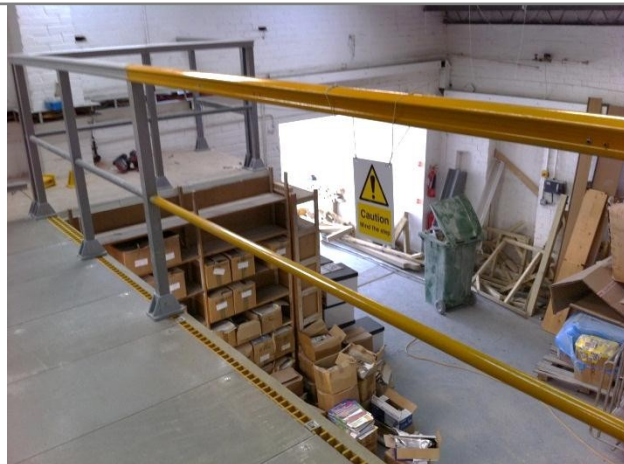
## Day 5 - Complete

- Handrailing now in position created using fibreglass omega, box and tubular sections
- Mid rail section now sprayed hi visibility yellow for maximum safety
- Additional handrail supports added on right hand side for extra safe storage



## Day 5 - Complete

- Stair handrail added for maximum safety



## Day 5 - Complete

- Caution sign added in area where top rail and mid rail can be removed



## Day 6 - In Operation

- Fork Lift truck being used to off-load new stock items safely
- This system protects staff from unnecessary manual handling and promotes safe handling of bulky and heavy items



## Day 6 - In Operation

- Mezzanine storage area provides anti-slip surface for maximum safety no matter the temperature or conditions



## Day 6 - In Operation

- This particular Mezzanine storage area has a capacity of 10 kN / m<sup>2</sup> (calculated @ ½% deflection)